



Stand Alone Building - Available

3925 N. Oneida St | Denver, CO 80207

Property Overview:

Building Size: 3,703 SF

Lease Rate: Contact Broker

NNN : \$4.37/SF

- Outdoor yard space
- Easy Access to I-70 off Smith Road
- Perfect for ghost kitchen, pet boarding, product manufacturing, non-profit, and many more!
- Zoned for multiple uses including MMJ Infused Products (Grandfathered in since 2010)
- Walk-In Cooler, Security and Storage Area in place

Contact

Sarah Sparks
Associate Broker
720.278.0542
sarah@impactcommercial.co



Impact Commercial Real Estate
9233 Park Meadows Drive
Lone Tree, CO 80124
720.608.4201
www.impactcommercial.com

Amenities

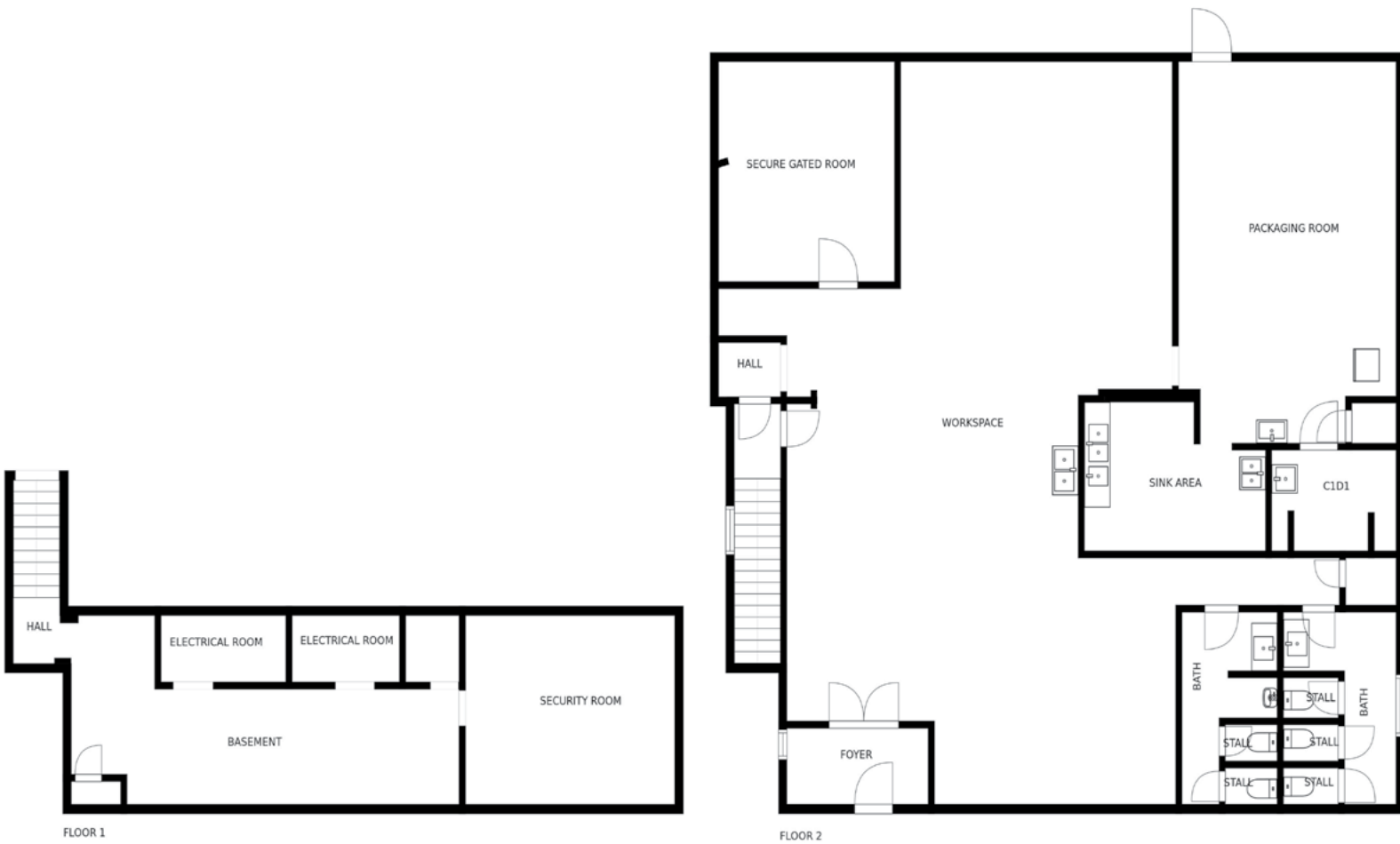
- 3,703 SF
- Year Built: 1965; Updated paint, flooring and bathrooms 2019
- Single Tenancy
- 9 Free Surface Parking Spaces
- .18 Acres (7,841 SF)
- Zoning: I-MX-5
- Pylon Signage

[Click Here for Photos](#)

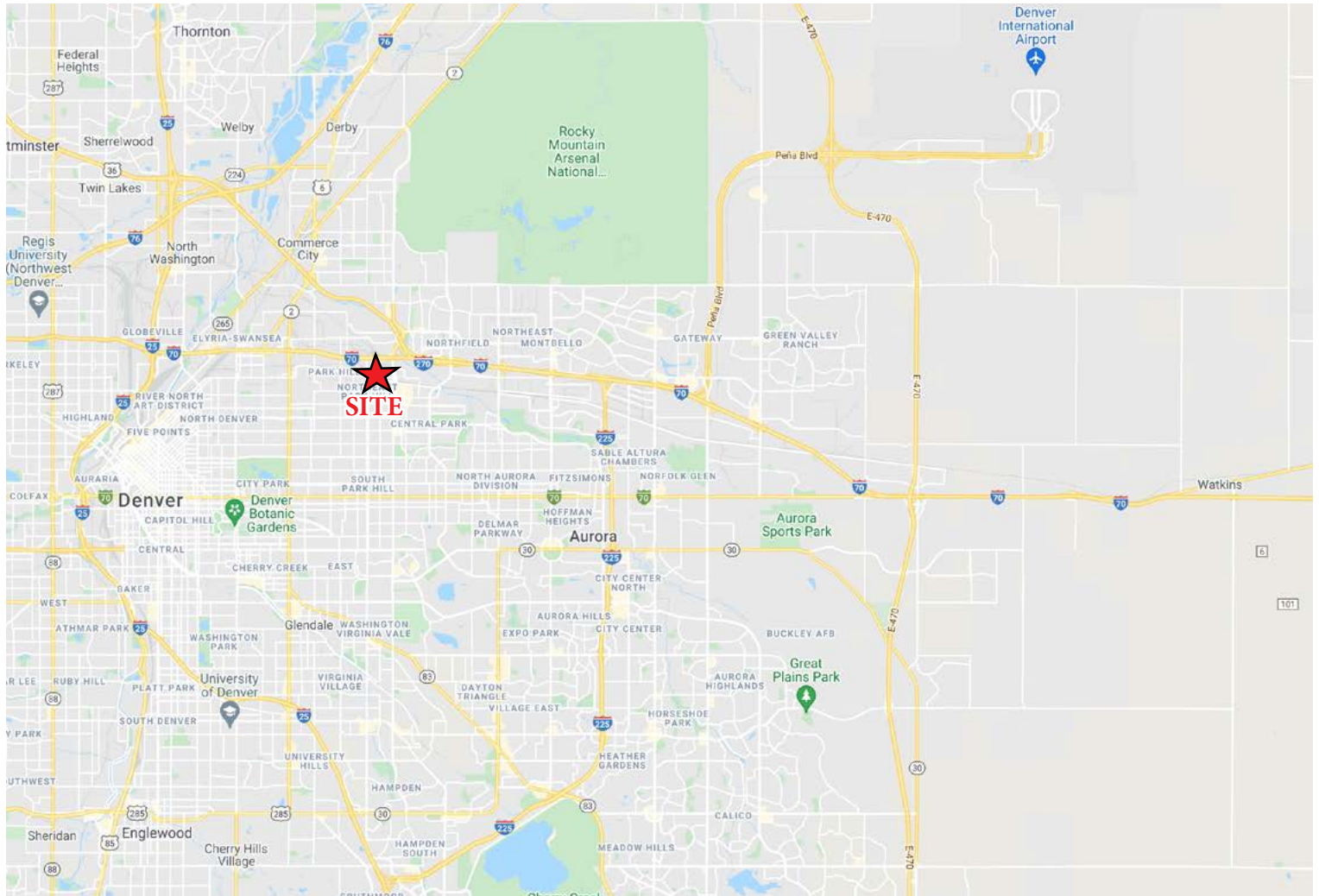


Floorplan

3925 Oneida Street, Denver, CO 80207 - All Floors



SIZES AND DIMENSIONS ARE APPROXIMATE, ACTUAL MAY VARY.



Demographics

	1 mile	3 miles	5 miles
Population			
2028 Projection	7,853	119,712	381,246
2023 Estimate	7,878	118,849	378,883
Growth 2010-2023	1.5%	1.9%	1.8%
Median Age	35.3	36.6	36.2
Households			
2023 Estimate	2,793	43,391	161,699
Household Income			
2023 Average	\$106,598	\$113,626	\$101,062

*Source: CoStar 2023

Contact

Sarah Sparks
 Associate Broker
 720.278.0542
 sarah@impactcommercial.co



Impact Commercial Real Estate
 9233 Park Meadows Drive
 Lone Tree, CO 80124
 720.608.4201
 www.impactcommercial.com